

TOKYO

Tokyo is the capital of Japan and the seat of the Emperor of Japan and the Japanese government. The Greater Tokyo Area is the most populous metropolitan area in the world. Tokyo is also one of Japan's 47 prefectures, consisting of 23 central city wards and multiple cities, towns and villages west of the city center. Prior to 1868, Tokyo was known as Edo. A small castle town in the 16th century, Edo became Japan's political center in 1603 when Tokugawa Ieyasu established his feudal government there. Today, Tokyo offers a seemingly unlimited choice of shopping, entertainment, culture and dining to its visitors today. The city's history can be appreciated in districts such as Asakusa, and in many excellent museums, historic temples and gardens. Contrary to common perception, Tokyo also offers a number of attractive green spaces in the city center and within relatively short train rides at its outskirts.



VENUE

The conference of Biomaterials International 2018 will be held at the Yayoi Auditorium (弥生講堂) located at the Hongo campus of the University of Tokyo.



CALL FOR PAPERS

Abstracts are invited on the symposia topics or other related areas of biomaterials. Short abstract of approximately 200 words and a two page camera-ready extended abstract should be submitted on-line before **April 30, 2018**. For further information, please visit <http://www.biomaterials.tw>

Organized by:



東京大学大学院
工学系研究科

SCHOOL OF ENGINEERING
THE UNIVERSITY OF TOKYO

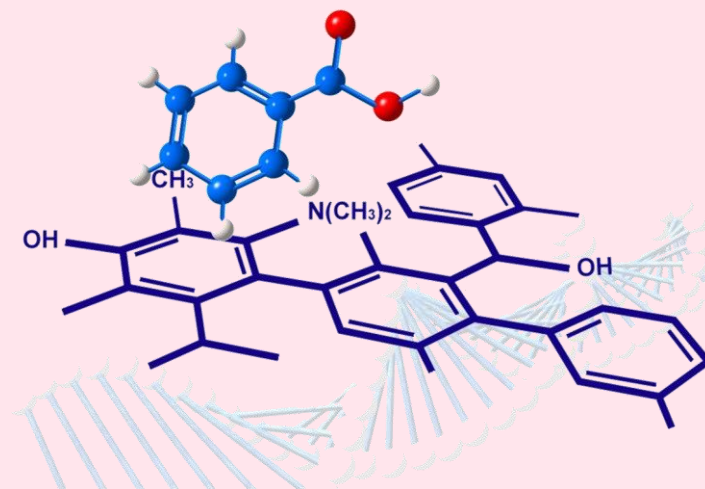


長庚大學

Chang Gung University

CALL FOR PAPERS

Biomaterials International 2018



July 22-26, 2018

Tokyo, Japan

<http://www.biomaterials.tw>

INVITATION

The Biomaterials International 2018 will take place at the University of Tokyo, Japan. The conference will bring together the international research communities from various scientific disciplines, including biology, physiology, materials science, physics, chemistry, engineering, and clinical science, to discuss new and exciting advances that involve biomaterials, techniques and methodologies. Apart from the usual conference activities consisting of plenary and invited lectures, general symposia and poster presentation, there will be a series of Special Symposia focusing on clinical applications of biomaterials in dental, orthopedic, cardiovascular etc. We will expect over 300 participants from around the world to attend. We hope that you will be able to join us at the Biomaterials International 2018 and have a meaningful as well as an enjoyable time with your colleagues in the field of Biomaterials. All members of the Organizing Committee of Biomaterials International 2018 are looking forward to meeting you at Tokyo.



ORGANIZING COMMITTEE

Chair: S.J. Liu (Chang Gung University)
Co-Chair: M. Takai, Y. Sakai (University of Tokyo)
Secretariats: T. Ito (University of Tokyo), C.H. Liu, S.W. Tsai, D.M. Lee (Chang Gung University)

GENERAL SYMPOSIA

- G1. Biodegradable materials and devices**
- G2. Metallic biomaterials**
- G3. Ceramic biomaterials**
- G4. Smart materials**
- G5. Synthesis and fabrication of biomaterials and devices**
- G6. Regenerative medicine and tissue engineering**
- G7. Interactions of biomaterials and cells**
- G8. Nanoscale biomaterials**
- G9. Delivery of drug, gene, vaccine, and active biomolecules**
- G10. Functionalization and bioactivity**
- G11. Biomaterials and cancers**

SPECIAL SYMPOSIA

- S1. Nanomedicines**
- S2. Dental materials**
- S3. Orthopedic biomaterials**
- S4. Stents and stents applications**
- S5. Ophthalmic biomaterials**
- S6. Neural applications**
- S7. Other techniques and applications**



REGISTRATION

Registration Type	Early Registration (before May 31, 2018)	Late Registration (after June 1, 2018)
Delegate	USD 700	USD 800
Student	USD 300	USD 400
Additional Purchases		
Conference dinner	USD 100	USD 150

* We collect in equivalent Taiwan dollars (TWD) if you pay the registration fees online by credit card.

IMPORTANT DATES

Abstract submission April 30, 2018
Early registration May 31, 2018
Conference date July 26-30, 2018



CONTACT

Secretariat, Biomaterials International 2018
Department of Mechanical Engineering
Chang Gung University
Tao-Yuan 333, Taiwan
TEL: 886-3-2118800 ext. 5724
FAX: 886-3-2118558
Email: biomat.inter@gmail.com